

meross

User Manual

English

■ Safety Information

- It is recommended that the device is used indoors in a dry location only, excluding the outdoor plug series.
- This device shall be used within its rated power included in the product specifications on the label.
- Make sure this device is fully plugged in and kept out of reach of children for safety concerns.
- Do not use the device where wireless devices are not allowed.
- Do not plug in this device one after the other.
- Do not cover the device when operating.
- No voltage only when the plug is disconnected.
- The socket-outlet that supplies power to the smart plug shall be installed near the equipment and shall be easily accessible.

- The device is not intended for use in locations where the temperature may be less than actual room conditions, such as unheated warehouses or garages. Please read the operating information on the minimum and maximum operating temperatures on the website.
- Do not place near heat sources or heat-producing devices.
- Do not expose this product to mechanical shock such as crushing, bending, puncturing, or shredding. Avoid dropping or placing heavy objects on this product.
- Do not use this product if visible defects are observed or if it has been damaged or modified. Contact our support for assistance.
- Do not attempt to disassemble, open, microwave, incinerate, paint, insert foreign objects into this product.
- Attempting to open or service the unit voids all warranties, express or implied. If you experience problems with the device, discontinue use, unplug the

device and contact our support for assistance.

- **Warning:** To reduce the risk of fire or electric shock, care shall be taken so that objects do not fall and liquids are not spilled into the enclosure through the openings.
- Unplug the device during lightning storms or when unused for long periods of time.

■ Package Contents

1 x Smart Plug

1 x User Manual

■ LED and Button Rules

① Button Rules

Press the button to turn the smart plug ON or OFF.
To factory reset the smart plug, press and hold the button for 5 seconds until the LED flashes between amber and green.

②LED Rules

Solid amber: Initializing/ Firmware upgrading

Rapidly flashing green: Wi-Fi connecting

Slowly alternating between amber and green:

Ready to pair

Solid green: Connected to home Wi-Fi/ Successfully paired

Solid red: No internet connection

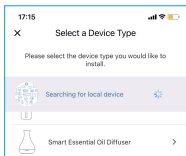
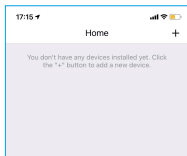
OFF: Your receptacle is not powered on / The smart plug is not turned on.

■ Installation Guide



1. Download the Meross app.
2. Make sure your smart device is covered by a strong Wi-Fi signal.

3. Launch the Meross app and log in to your account, or if you are a new user, tap Sign up to create a new account.
4. Tap the “+” icon to select the type of smart device you want to add, and then you can follow the setup wizard to finish the configuration.
5. Relocating the smart device does not require additional operations, provided that it is on the same network with a strong Wi-Fi signal.



If you encounter any other issues during installation, please refer to the FAQs below or visit our website's FAQ page for more information.



FAQ for Matter-Supported Device



FAQ for Homekit-Supported Device



FAQ for Third-party Integration

■ Warranty

Meross products are covered by a 24-month limited warranty from the date of purchase. Please visit <https://www.meross.com/support/warranty> for detailed warranty policy and product registration.

■ Support

For technical support, user guide, warranty, FAQs, and other information, please visit <https://www.meross.com/support/>

■ Disclaimer

1. The function of this smart device is tested under a typical circumstance described in our specifications. Meross does NOT guarantee that the smart device shall perform exactly the same as described under all circumstances.
2. By using third-party services including but not limited to Amazon Alexa, Google Assistant, Apple HomeKit and SmartThings, customers acknowledge that Meross shall not be held liable in any way for the data and private information collected by such parties. Meross's total liability is limited to what is expressly covered in its Privacy Policy.
3. Damages arising from ignorance of the SAFETY INFORMATION shall not be covered by Meross aftersales service, nor does Meross take any legal responsibility therefrom.

Customers acknowledge understanding of these articles clearly by reading this manual.

SIMPLE DEVICE SIMPLIFY YOUR LIFE

Email: support@meross.com
Website: www.meross.com

Manufacturer: Chengdu Meross Technology Co., Ltd.
Address: Floor 3, Building A5, Shijicheng Road No 1129,
Gaoxin, Free Trade Trial Zone, Chengdu, Sichuan, China.



MADE IN CHINA
INDOOR USE ONLY



If you encounter any other issues during installation, please refer to the FAQs below or visit our website's FAQ page for more information.



FAQ for Matter-Supported Device



FAQ for HomeKit-Supported Device

English

Safety Information

- It is recommended that the device is used indoors in a dry location only, excluding the outdoor plug series.
- This device shall be used within its rated power included in the product specifications on the label.
- Make sure this device is fully plugged in and kept out of reach of children for safety concerns.
- Do not use the device where wireless devices are not allowed.
- Do not plug in this device one after the other.
- Do not cover the device when operating.
- No voltage only when the plug is disconnected.
- The socket-outlet that supplies power to the smart plug shall be installed near the equipment and shall be easily accessible.



FAQ for Third-party Integration

Warranty

Meross products are covered by a 24-month limited warranty from the date of purchase. Please visit <https://www.meross.com/support/warranty> for detailed warranty policy and product registration.

Support

For technical support, user guide, warranty, FAQs, and other information, please visit <https://www.meross.com/support/>

- The device is not intended for use in locations where the temperature may be less than actual room conditions, such as unheated warehouses or garages. Please read the operating information on the minimum and maximum operating temperatures on the website.
- Do not place near heat sources or heat-producing devices.
- Do not expose this product to mechanical shock such as crushing, bending, puncturing, or shredding. Avoid dropping or placing heavy objects on this product.
- Do not use this product if visible defects are observed or if it has been damaged or modified. Contact our support for assistance.
- Do not attempt to disassemble, open, microwave, incinerate, paint, insert foreign objects into this product.
- Attempting to open or service the unit voids all warranties, express or implied. If you experience problems with the device, discontinue use, unplug the

- device and contact our support for assistance.
- Warning: To reduce the risk of fire or electric shock, care shall be taken so that objects do not fall and liquids are not spilled into the enclosure through the openings.
- Unplug the device during lightning storms or when unused for long periods of time.

Package Contents

- 1 x Smart Plug
- 1 x User Manual

LED and Button Rules

Button Rules

Press the button to turn the smart plug ON or OFF. To factory reset the smart plug, press and hold the button for 5 seconds until the LED flashes between amber and green.

SIMPLE DEVICE
SIMPLIFY YOUR LIFE

Email: support@meross.com
Website: www.meross.com

Manufacturer: Chengdu Meross Technology Co., Ltd.
Address: Floor 3, Building A5, Shijicheng Road No. 1129, Gaosin, Free Trade Trial Zone, Chengdu, Sichuan, China.

MADE IN CHINA
INDOOR USE ONLY

LED Rules

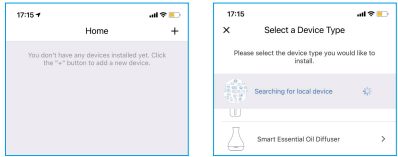
- Solid amber:** Initializing/ Firmware upgrading
- Rapidly flashing green:** Wi-Fi connecting
- Slowly alternating between amber and green:** Ready to pair
- Solid green:** Connected to home Wi-Fi/ Successfully paired
- Solid red:** No internet connection
- OFF:** Your receptacle is not powered on / The smart plug is not turned on.

Installation Guide



1. Download the Meross app.
2. Make sure your smart device is covered by a strong Wi-Fi signal.

3. Launch the Meross app and log in to your account, or if you are a new user, tap Sign up to create a new account.
4. Tap the "+" icon to select the type of smart device you want to add, and then you can follow the setup wizard to finish the configuration.
5. Relocating the smart device does not require additional operations, provided that it is on the same network with a strong Wi-Fi signal.



MSS305通用说明书-QIG

meross

成都觅瑞科技有限公司

型号	品名	料号
MSS305	QIG	6102000627-241220

版本更新记录：

日期	内容	设计师
20241218	首稿	肖雨欣
20241220	去掉封面型号, 去掉尾页GMA, 将app图片截图放大, 将warranty错误换行改正, 增加印刷要求	肖雨欣

校对：何雨辰

批准：夏涛

日期：20241220

印刷说明：

- 1、尺寸：60x65mm
- 2、双面印刷+4色印刷+105g哑粉
- 3、折页

